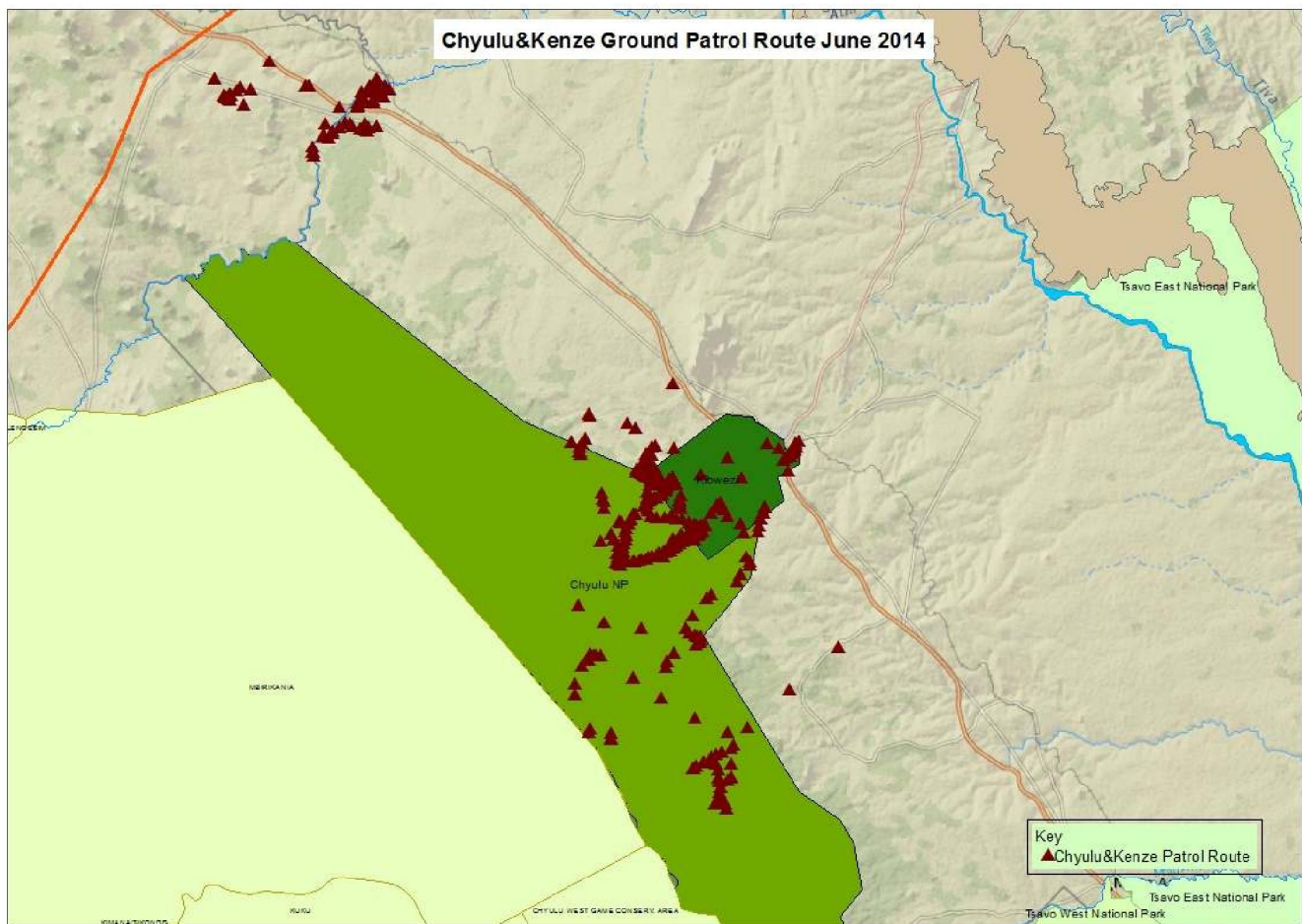


JUNE 2014 CHYULU & KENZE TEAMS

PATROL AREA: Chyulu National Park, Kibwezi Forest and surrounding communities

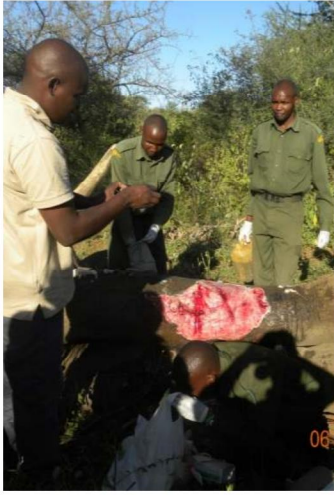
MAP OF MONTHLY PATROL ROUTES



SECURITY & INCIDENTS

ELEPHANT TREATMENT 1/06/2014

The teams support the Tsavo Vet Unit in treating an elephant with a severe leg wound found in the Kiboko area



CHARCOAL BURNING 9/06/14

The team found a number of charcoal pits and kilns within the Kiboko area which they destroyed



ILLEGAL LOGGING 9/06/14

The Chyulu/Kenze team arrested a man for logging within the Chyulus Hills National Park



LIVESTOCK INTRUSION
14/06/14

The team found a large herd of cattle grazing within the Kikunduku area and removed them from the Park



ILLEGAL LOGGING
14/06/14

Small snares were collected from within the Kikunduku area set by bushmeat poachers to catch small game



CHARCOAL BURNING
21/06/14

More charcoal kilns were found within the Park and destroyed by the rangers



LIFTING SNARES
23/06/14

On routine patrols in the Kiboko area more small snares were found set for small game



CHYULU UNIT MONTHLY DATA MAP

