



ANTI-POACHING UNITS

MONTHLY REPORT

FEBRUARY 2014

FEBRUARY 2014

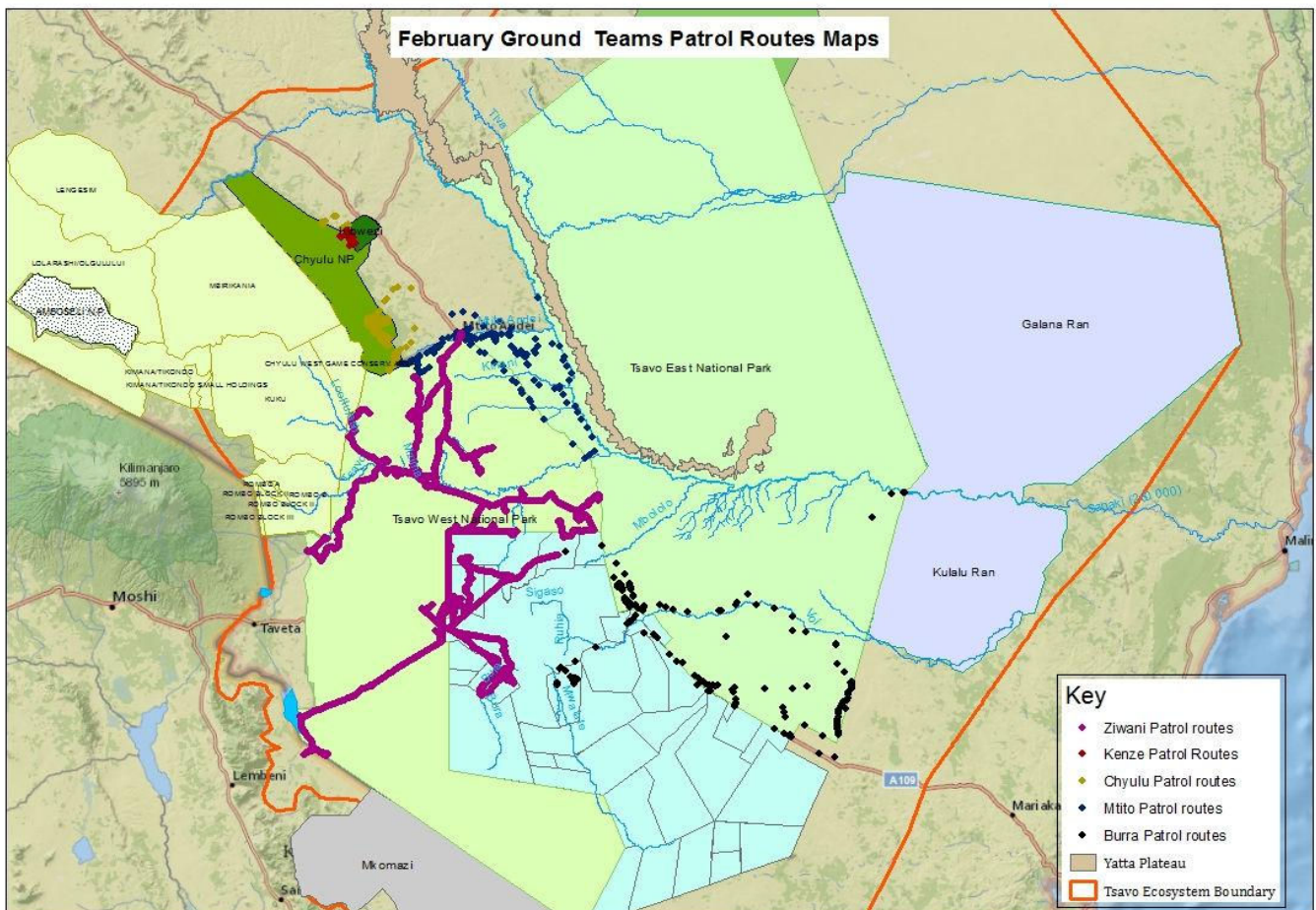
MONTHLY SUMMARY: ALL UNITS

TOTAL SNARES COLLECTED:	261
TOTAL ARRESTS MADE:	30
TOTAL WEAPON/EQUIPMENT CONFISCATIONS:	52
TOTAL ILLEGAL STRUCTURES DESTROYED:	21

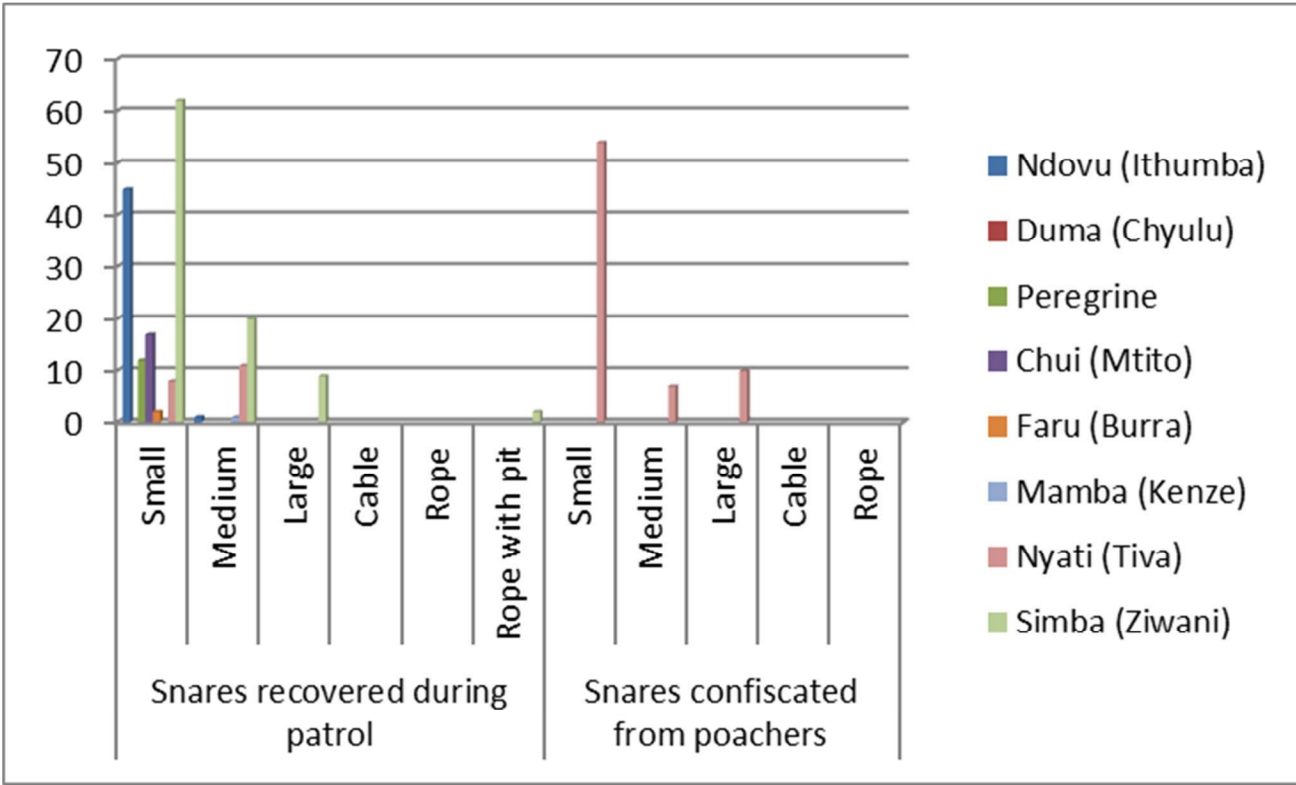
February was marked by heavy rain during a time that is normally very dry, which hampered operations for several days, but the rains also appeared to have an effect on the level of illegal activity in the Park as there was a decline in illegal activities seen and arrests made during the month, in part due to the weather, but also due to harsher penalties recently introduced in the new Wildlife Act.

There were still large amounts of charcoal burning taking place in the Park and it is worth noting that there were several instances of charcoal burners also participating in bush meat poaching, evidenced by paraphernalia discovered in their camps or on their person such as snares. Several arrests of poachers were made including three notorious ivory poachers, which is considered a major victory for the DSWT team. It is hoped that these poachers will be punished to the full extent of the new Wildlife Act. In addition to anti-poaching efforts, the DSWT teams also participated in the darting and treatment of 3 elephants with various poaching-related injuries that would have been fatal without intervention.

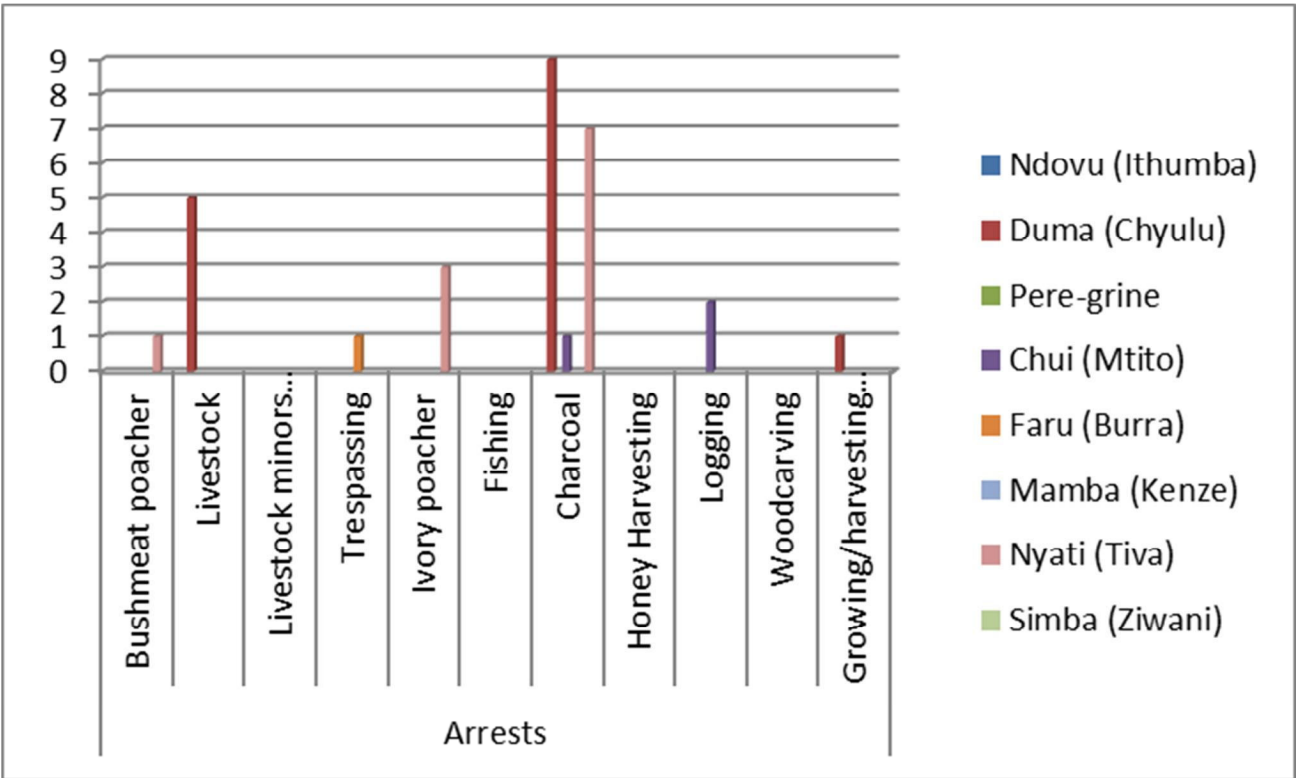
MAP OF ALL UNIT'S PATROL ROUTES



TOTAL SNARES COLLECTED - February 2014 - All Teams



TOTAL ARRESTS MADE - February 2014 - All Teams

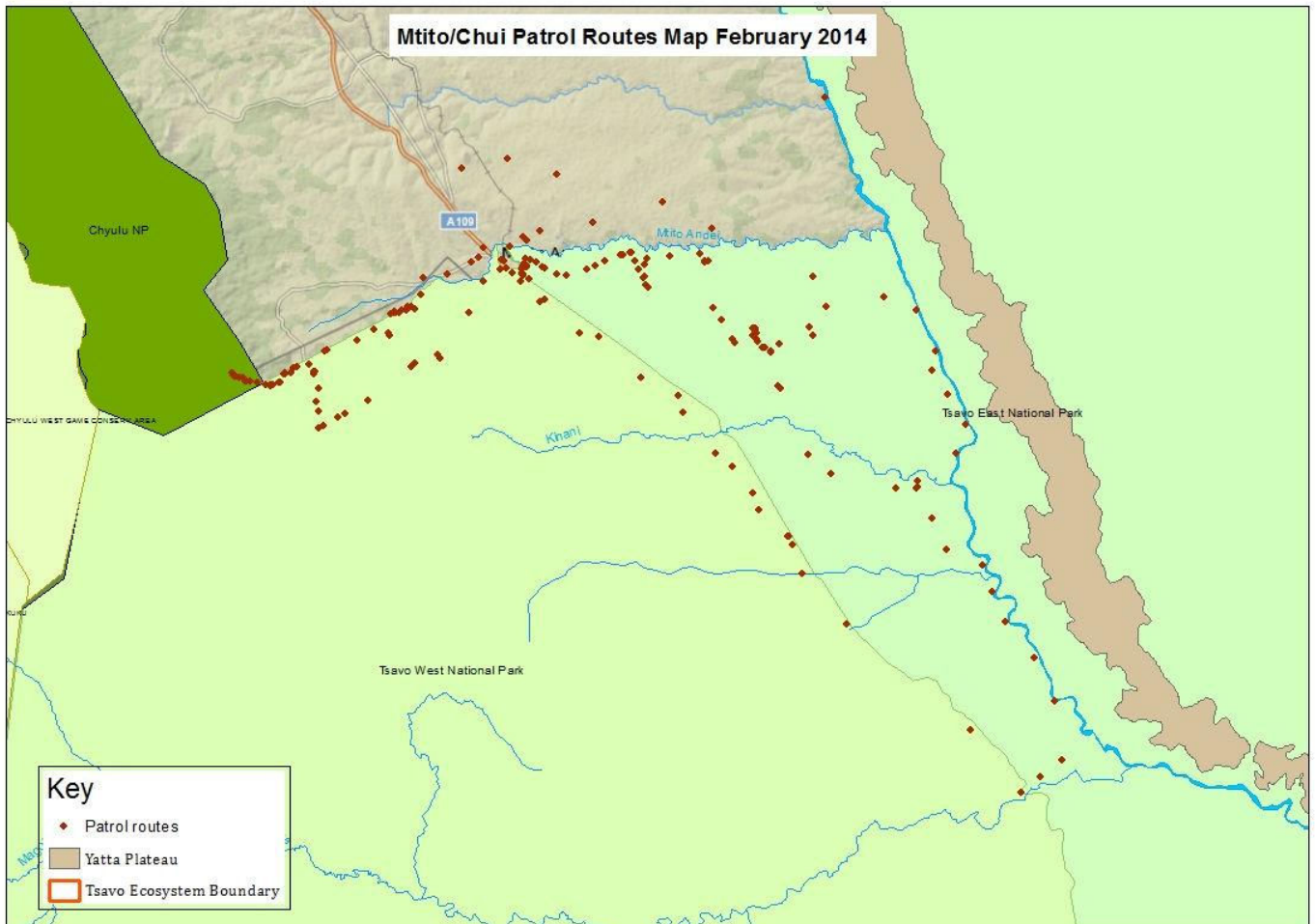


JANUARY 2014

MTITO TEAM

PATROL AREA: Tsavo Triangle, northern sector of Tsavo West NP & surrounding communities

MAP OF MONTHLY PATROL ROUTES



SECURITY & INCIDENTS

ILLEGAL LOGGING 18/02/2014

The Chui (Mtito) found extensive logging within the Park boundaries but the perpetrators had fled



CHARCOAL BURNING 21/02/14

The team found and destroyed an illegal charcoal kiln within the Park, the charcoal burners had fled the scene



ILLEGAL LIVESTOCK 24/02/14

The Chui (Mtito) team removed illegal livestock from the Park, driving the cows back outside the Park boundary



ILLEGAL LOGGING
25/02/14

Loggers were found illegally chopping down trees within the Park boundaries and were arrested



MTITO UNIT MONTHLY DATA MAP

