



## Burra Team

### De-Snaring Report for September, 2010

#### Participants

Peter Kariuki  
Piliias Lekeele  
Henry Lekochere  
John Malonza  
Samuel Masaku

#### Areas Patrolled

Manyani  
Mbulia  
Ndi  
Ngutuni  
Sagalla Ranch

#### Arrests

1 Arrest(s) this month

#### Illegal Activities

Illegal Activity	No. Incidents	Location	Percentage	Scale	Arrests
Poaching , Snaring - Small/Medium Game	1	Ngutuni	100.00%	Commercial	No
Poaching , Snaring - Small Game	2	Sagalla	20.00%	Commercial	No
Poaching , Snaring - Small Game	1	Sagalla	10.00%	Commercial	Yes
Poaching , Snaring - Small Game	1	Ndi	10.00%	Commercial	No
Poaching , Snaring - Small Game	1	Mbulia	10.00%	Commercial	No
Poaching , Snaring - Medium Game	2	Sagalla	33.33%	Commercial	No



## Burra Team

### De-Snaring Report for September, 2010

#### Illegal Activities

Illegal Activity	No. Incidents	Location	Percentage	Scale	Arrests
Poaching , Snaring - Medium Game	1	Ngutuni	16.67%	Commercial	No
Poaching , Snaring - Medium Game	1	Mbulia	16.67%	Subsistence	No
Poaching , Snaring - Medium Game	1	Mbulia	16.67%	Commercial	No
Poaching , Snaring - Large Game	1	Sagalla	20.00%		No
Logging , Wet Wood	1	Sagalla	100.00%	Commercial	No
Footprints , Fresh Tracks	1	Sagalla	3.70%		No
Footprints , Fresh Tracks	1	Ngutuni	3.70%		No
Footprints , Fresh Tracks	1	Mbulia	3.70%		No

\* 'Percentage' indicates the overall percentage occurrence (encountered by all de-snaring teams) of that particular illegal activity during the selected month.

#### Snares Collected

Snare Type	Snare Size	Snare Description	No. Confiscated
Thin Wire	Small	Cluster	41
Medium Wire	Medium	Cluster	112
Cable	Large		1

**Total Snares Collected: 154**



## Burra Team

### De-Snaring Report for September, 2010

#### Community Work

Target Group	Target Group Name	Activity	Location
School	Gedion Mosi Primary	School Trip	Sagalla
School	Kileva Primary School	School Trip	Sagalla

#### Monthly Summary

During the month of September, the team lifted a total of 154 snares in all the areas patrolled most of which targeted small/medium game. A lesser kudu carcass was found snared at Sagalla ranch and the team managed to arrest one poacher with in possession of snares and booked him at Voi Police Station.

The team has noticed that illegal activities is on the increase outside the Park. These range from charcoal burning, logging and as well as the use of snares for poaching among others.

The team organized two school trips. The two schools which had benefited the field trip were Kileva Eastfield primary school and Gideon Mosi primary school. Both the two schools visited the Parks main attraction features like the Aruba Dam and Mudanda Rock and saw many herds of elephants, buffaloes, zebras, giraffes impalas and even lions were seen during game drives. The pupils also visited the Voi orphanage whereby they got an opportunity to interact with the baby elephants and received an educational lecture from the elephant Keepers. Both schools greatly appreciated the opportunity granted to them and learned a lot about wildlife, conservation, and how their lives are inter-related to nature, leaving a positive mark on their attitude towards Conservation.



## Burra Team

### De-Snaring Report for September, 2010



A snared Lesser Kudu found at Sagalla



The snared Lesser Kudu found at Sagalla ranch



## Burra Team

### De-Snaring Report for September, 2010



A poacher arrested at Sagalla Ranch



A large snare at Mbulia Ranch



## Burra Team

### De-Snaring Report for September, 2010



A bird trap recovered at Sagalla Ranch



Charcoal burning at Mbulia



## Burra Team

### De-Snaring Report for September, 2010



Many charcoal kilns seen at Mbulia



Gideon Mosi school trip, the children visit the Park's main attractions



## Burra Team

### De-Snaring Report for September, 2010



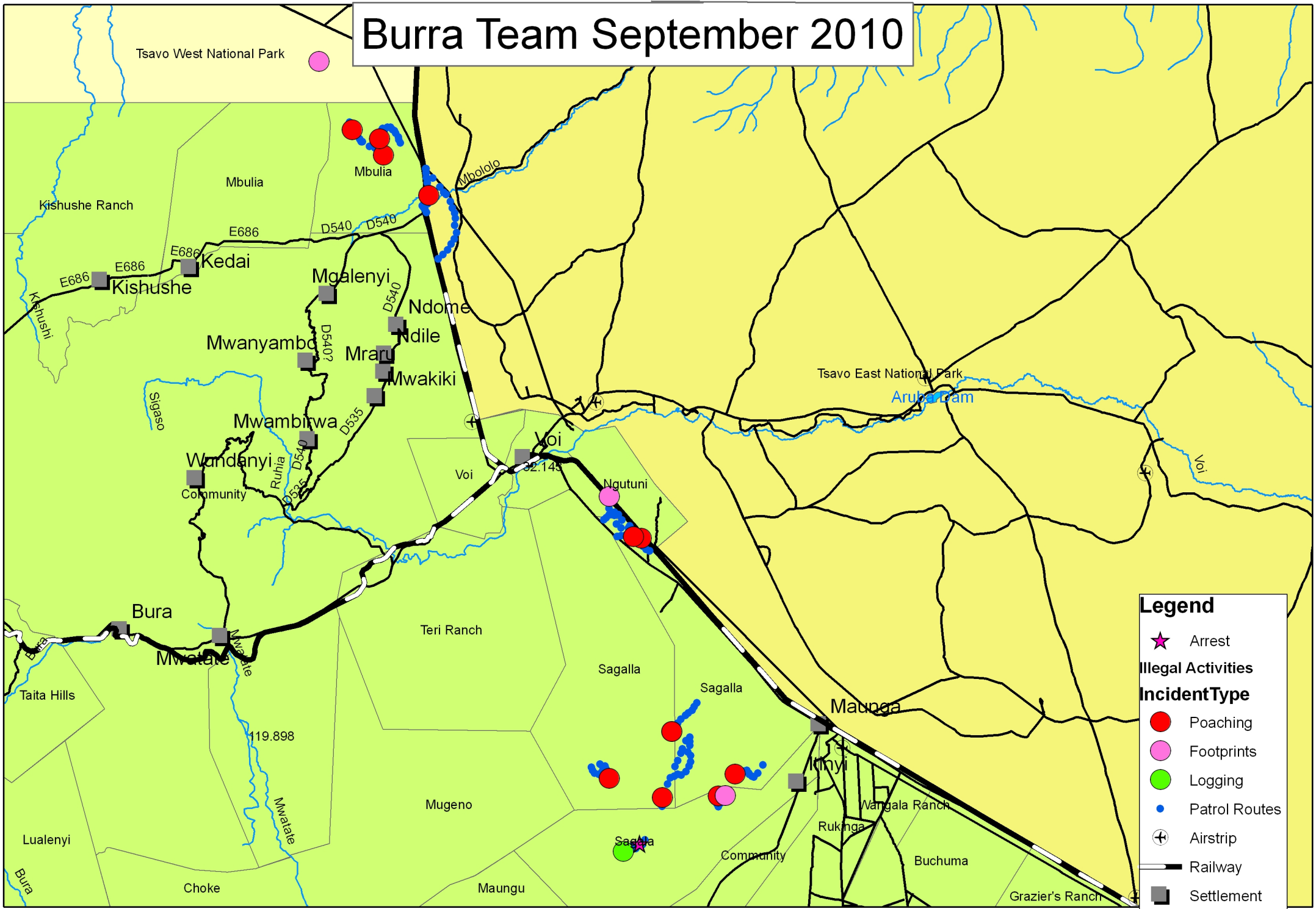
Gideon Mosi School pupils visit the elephant orphans



Kileva students visit Tsavo East National Park



# Burra Team September 2010



**Legend**

- ★ Arrest
- Illegal Activities**
- IncidentType**
- Poaching
- Footprints
- Logging
- Patrol Routes
- ⊕ Airstrip
- Railway
- Settlement
- Roads/ Tracks