



## Chyulu Team

### De-Snaring Report for October, 2011

#### Participants

Paul        Kamau  
Julius      Kyalo  
Daniel      Lelekoiten  
James      Mbuthia  
John        Wahome  
David       Wambua

#### Areas Patrolled

KARI  
Kenze  
Kettle  
Kikunduku  
Kima Kiu  
Kisula  
Mola  
Mukurulo  
Satellite  
Usalama

#### Arrests

20 Arrest(s) this month

#### Illegal Activities

Illegal Activity	No. Incidents	Location	Percentage	Scale	Arrests
Footprints , Fresh Tracks	3	Kisula	5.77%		No
Charcoal Burning , Charcoal Kiln	1	Kari	5.56%	Commercial	No
Charcoal Burning , Charcoal Kiln	2	Kikunduku	11.11%	Commercial	Yes



## Chyulu Team

### De-Snaring Report for October, 2011

#### Illegal Activities

Illegal Activity	No. Incidents	Location	Percentage	Scale	Arrests
Footprints , Fresh Tracks	2	Boma Eight	3.85%		No
Footprints , Fresh Tracks	1	Boma Eight	1.92%	Commercial	No
Footprints , Fresh Tracks	1	Kari	1.92%		No
Footprints , Fresh Tracks	7	Kari	13.46%	Commercial	No
Footprints , Fresh Tracks	11	Kettle	21.15%		No
Footprints , Fresh Tracks	4	Kikunduku	7.69%		No
Charcoal Burning , Charcoal Kiln	5	Kari	27.78%	Commercial	Yes
Footprints , Fresh Tracks	2	Kima Kiu	3.85%	Commercial	No
Poaching , Snaring - Small Game	1	Satelite	5.26%		No
Footprints , Fresh Tracks	2	Mola	3.85%		No
Footprints , Fresh Tracks	5	Mola	9.62%	Commercial	No
Footprints , Fresh Tracks	1	Satelite	1.92%		No
Poachers' Hideout(s) , Fresh Hideout	1	Kari	25.00%	Commercial	No
Poachers' Hideout(s) , Fresh Hideout	1	Kima Kiu	25.00%	Commercial	No



## Chyulu Team

### De-Snaring Report for October, 2011

#### Illegal Activities

Illegal Activity	No. Incidents	Location	Percentage	Scale	Arrests
Poachers' Hideout(s) , Fresh Hideout	1	Kisula	25.00%		No
Poachers' Hideout(s) , Old Hideout	1	Kisula	12.50%		No
Poaching , Snaring - Medium Game	2	Kari	50.00%	Commercial	No
Footprints , Fresh Tracks	6	Kikunduku	11.54%	Commercial	No

\* 'Percentage' indicates the overall percentage occurrence (encountered by all de-snaring teams) of that particular illegal activity during the selected month.

#### Snares Collected

Snare Type	Snare Size	Snare Description	No. Confiscated
Thin Wire	Medium	Scattered	30
Thin Wire	Medium	Cluster	3

<b>Total Snares Collected:</b>	<b>33</b>
--------------------------------	-----------

#### Monthly Summary



## **Chyulu Team**

### **De-Snaring Report for October, 2011**

#### **Monthly Summary**

The team was based at Kikunduku, area an important charcoal burning hotspot, where 4 people were arrested. The area is an important patrol area that requires regular visits. After some time we relocated to Mukurulo area, for the rest of the month. The main target was KARI, which remains another important patrol area as it is a Chyulu NP buffer zone, and presently animals have moved there. Arsonists' burning KARI, in order to entice animals to move to this vulnerable area, remains one of the greatest challenges facing the team. It is important to note that KARI is unique for all kinds of wildlife forage including the endangered Black Rhinos which frequent the Ranch. Both the desnaring team and KWS rangers monitor the area very closely in ensuring that the area is safe and free of poachers. This month both the desnaring team and KWS rangers managed to arrest 11 people doing illegal activities in KARI. Snares were also lifted. The teams also patrolled the Rhino ranging area to ensure maximum security of wildlife.

The month was rather a busy one with 2 school trips being done. The schools were Ngomano secondary school and Maikuu primary schools. During the trip the pupils were taught the importance of wildlife, and at the same time they enjoyed the game drive. Almost all the pupils had never been into the park.

Kenze team has been active and managed to arrest 5 people illegally in the park. The team is working very hard to ensure there are no illegal activities within the forest.

The third phase of Kibwezi forest fence line is complete. This implies that the forest is completely sealed from the tarmac road. The gates which are people control points are in place and manned 24 hours. This means that there will be no more illegal access into the forest. At the onset of the rains we expect that the community will plant and harvest their crops without wildlife conflict. Generally the community is happy because of the fence.

Summary by,

James Mbuthia and Paul Kamau.



## Chyulu Team

### De-Snaring Report for October, 2011



Maikuu primary school pupils at information centre



Maikuu primary school pupils at information centre



## Chyulu Team

### De-Snaring Report for October, 2011



Muusini primary school video show



Ngomano pupils at Mzima springs



## Chyulu Team

### De-Snaring Report for October, 2011



Arrested charcoal burners at Kikunduku



Illegal livestock grazing



## Chyulu Team

### De-Snaring Report for October, 2011



Illegal charcoal kiln



Illegal charcoal kiln at Kikunduku





## Chyulu Team

### De-Snaring Report for October, 2011

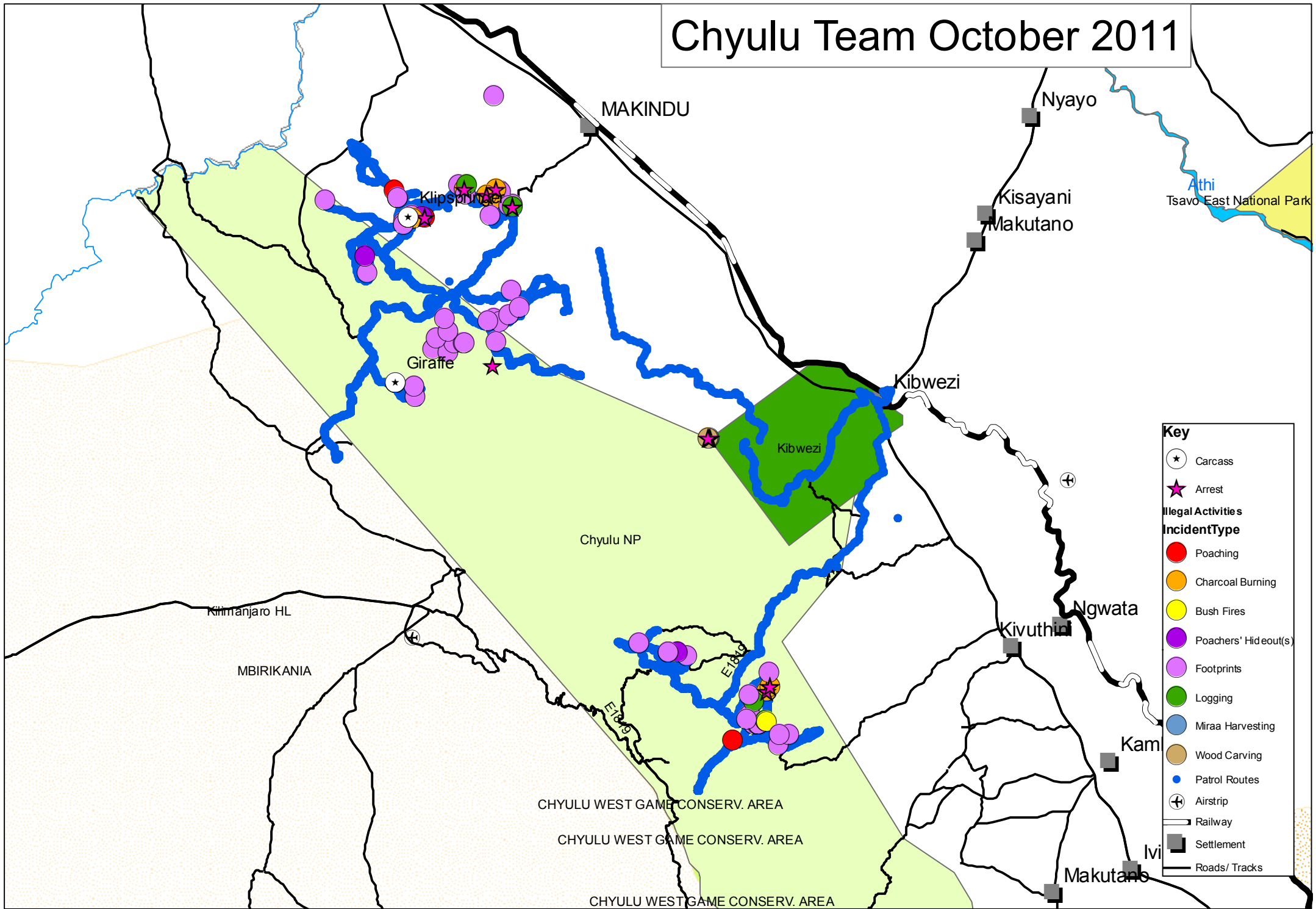


Lifting snares targeting giraffe



Wood carving hide at Kisula

# Chyulu Team October 2011



**Key**

- ★ Carcass
- ★ Arrest
- Illegal Activities**
- IncidentType**
- Poaching
- Charcoal Burning
- Bush Fires
- Poachers' Hideout(s)
- Footprints
- Logging
- Miraa Harvesting
- Wood Carving
- Patrol Routes
- ⊕ Airstrip
- Railway
- Settlement
- Roads/ Tracks