



THE DAVID SHELDRIK WILDLIFE TRUST

**PO BOX 15555
MBAGATHI 00503
NAIROBI
KENYA
TEL: 020 230 1396
Email: rc-h@africaonline.co.ke**

www.sheldrickwildlifetrust.org

**DE-SNARING REPORT
JULY 2013**

ZIWANI/SIMBA TEAM



Ziwani/Simba Team

De-Snaring Report for July, 2013

Participants

Marayion Lelekoiten
Peterson Kivara
Ali Diba
Joseph Macharia
Noah Lesimirdana

Areas Patrolled

Ziwani
Wanjala
Taita Hills Sanctuary
Salt Lick
Oza Ranch
Ndi
Mbulia
Manyani
Maktau
Lake Jipe
Kishushe Ranch
Kichwa Tembo
Kangenchwa

Arrests

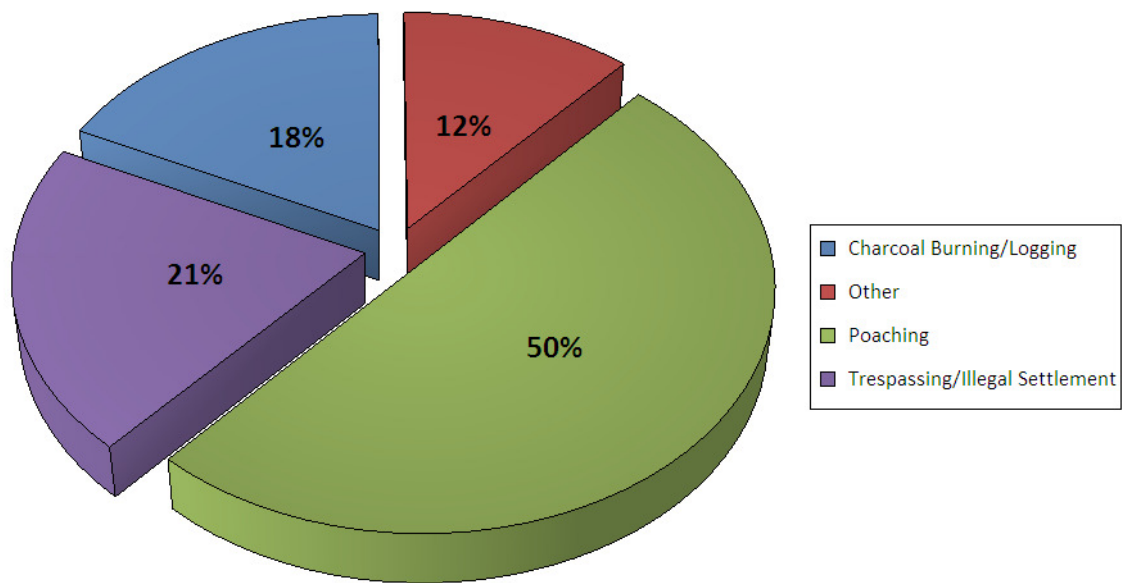
2 Arrest(s) this month



Ziwani/Simba Team

De-Snaring Report for July, 2013

Main Illegal Activities experienced during the Month





Ziwani/Simba Team

De-Snaring Report for July, 2013

Snares Collected

Snare Type	Snare Size	Snare Description	No. Confiscated
Thin Wire	Small	Scattered	42
Thin Wire	Small	Cluster	22
Medium Wire	Medium	Scattered	6
Medium Wire	Medium	Line	3
Medium Wire	Medium	Cluster	17
Medium Wire	Medium		0
Cable	Large	Scattered	4

Total Snares Collected: 94



Ziwani/Simba Team

De-Snaring Report for July, 2013

Monthly Summary

SIMBA MOBILE JULY 2013 MONTHLY WORD REPORT

The month turned up to be very busy with a gamut of activities, having familiarized with the area the previous month. The areas the team covered during this month included Kangenchwa, Manyani, Ziwani, and Maktau area, Taita hill Wildlife Sanctuary and Lake Jipe areas. These are the major hotspots of the southern region of Tsavo West National Park.

MANYANI AREA

The area hosts KWS Law Enforcement Academy and the park bordering communities at Manyani centre. During our normal patrols we spotted an emaciated sick elephant, after a period of monitoring on its feeding habit we summoned the veterinary doctor on discovering of its worsening health condition. On 18th day of the month accompanied by veterinary doctor and Mr. Nick, the team mounted a search to treat the two wounded elephants. These elephants were attended to and aerial and ground patrols were done to monitoring the positive progress of the beasts throughout the month.

MBULIA RANCH

This is a private ranch that borders Tsavo National park in the southern side. The inhabitants of the area hail from Kishushe village and Ndi area. In these locations, the team managed to lift quite a substantial number of snares especially at Ndi area. The team also arrested two poachers who had laid 45 small and large snares, and had logs in their possession cut from the area. On arresting them the team then booked them at Voi Police station.

TAITA HILL WILDLIFE SANCTUARY

In the location we patrolled Salt lick and Taita hill lodge area where the team was able to lift a number of snares and also sighted a recorded high population of herbivores. At some point we accompanied KWS problematic animal control team to drive elephants away from community farms, into the ranches.

Towards the end of the month we laid ambushes in the most strategic routes frequented by miners and poachers, but unfortunately the team did not manage to apprehend any one. Due to continuous and frequent patrols, illegal activities in the area have drastically reduced as evident in the high population of small games like dik diks that are mostly targeted by poachers. The team is committed and zealous in ensuring optimal wildlife protection and environment conservation.

Report compiled by:
Joseph Macharia.



Ziwani/Simba Team

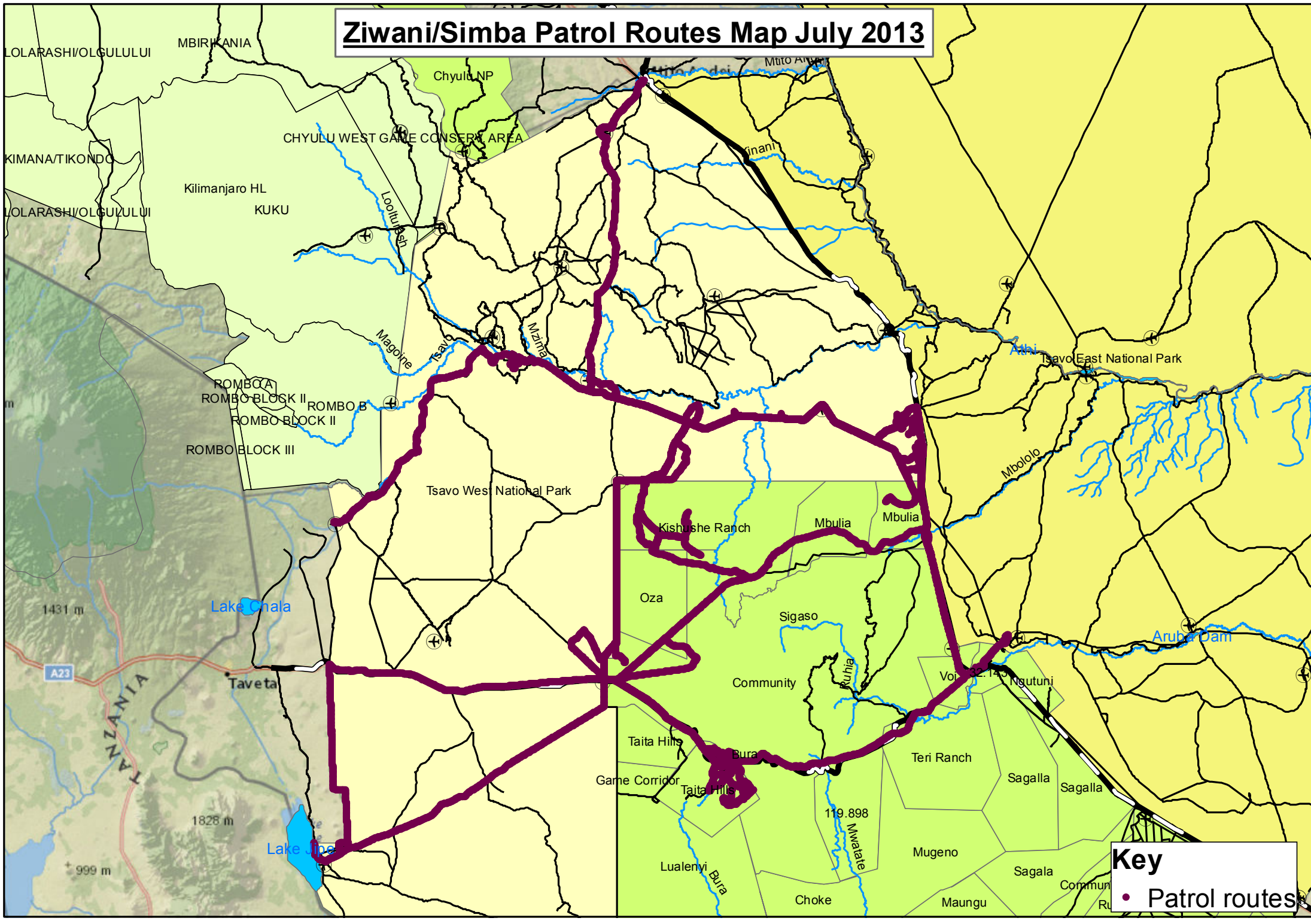
De-Snaring Report for July, 2013

KWS Ranger Participation

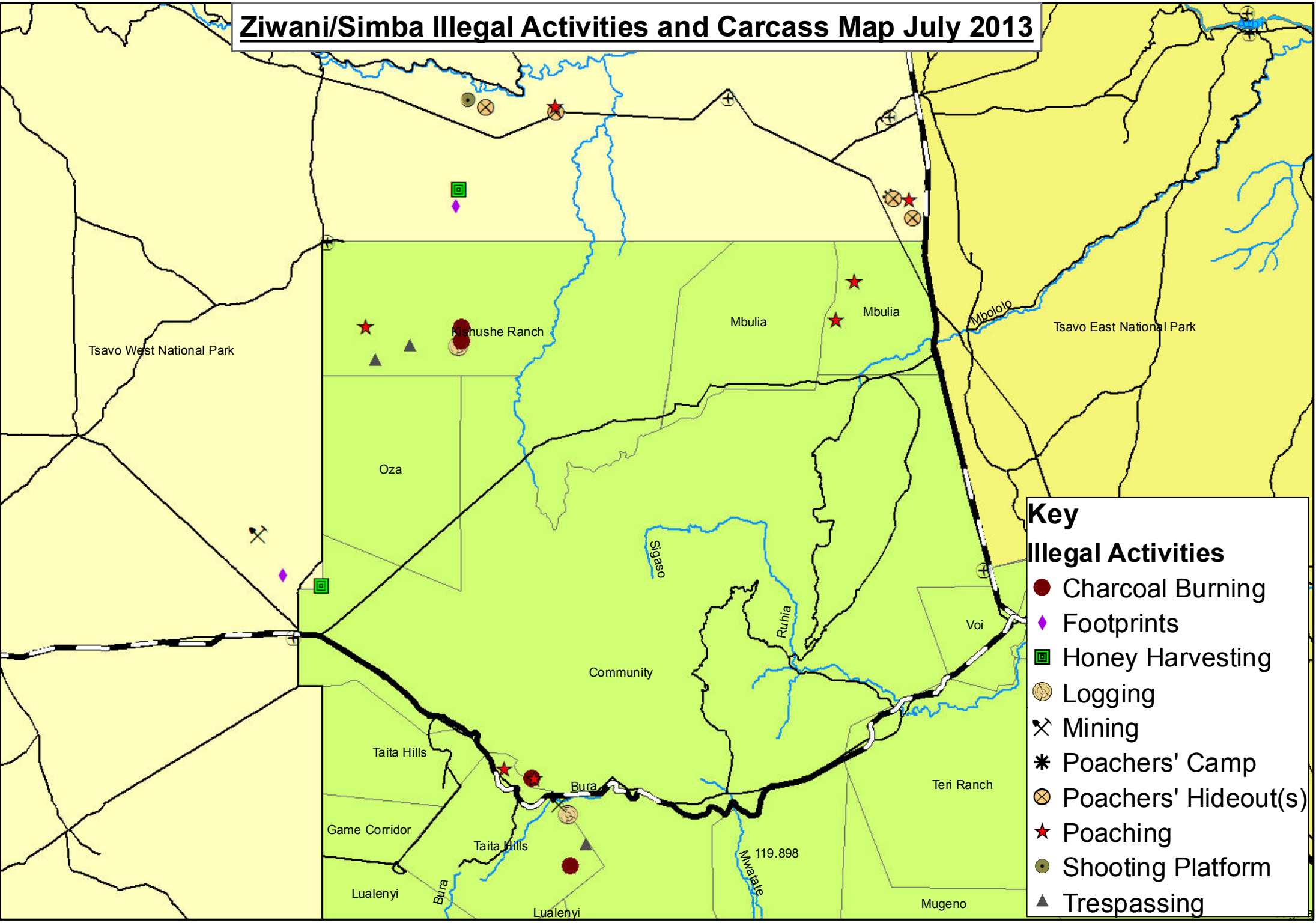
Patrol Team	KWS Ranger Name	No. Patrol Days
Ziwani/Simba	Shadrack, omuse	2
Ziwani/Simba	Robert, Rono	3
Ziwani/Simba	Peterson, Njeru	8
Ziwani/Simba	Noah, Tumwet	25
Ziwani/Simba	John, Kamau	1
Ziwani/Simba	Joel, Choba	1
Ziwani/Simba	Jacob, Muriithi	25
Ziwani/Simba	Jackson, Shablimo	1
Ziwani/Simba	Gabriel, Githaiga	3
Ziwani/Simba	Gabriel, Gathaiga	1

Total Man Days of KWS Participation: 70

Ziwani/Simba Patrol Routes Map July 2013



Ziwani/Simba Illegal Activities and Carcass Map July 2013



Key

Illegal Activities

- Charcoal Burning
- ◆ Footprints
- Honey Harvesting
- ⊗ Logging
- ⌵ Mining
- * Poachers' Camp
- ⊗ Poachers' Hideout(s)
- ★ Poaching
- Shooting Platform
- ▲ Trespassing

Ziwani/Simba team July 2013 desnaring report photographs



An active mine in Maktau area



Cattle boma abandoned.



Team member destroying an old shooting platform in Kichwa tembo.



Team members help in treating a wounded elephant.