



## DE-SNARING UNITS & ANTI-POACHING EFFORTS

### MONTHLY REPORT

# **MAY 2019**

# MAY 2019

## MONTHLY SUMMARY: ALL UNITS



**43**  
Arrests  
Made



**2**  
Elephant  
Tusks  
Recovered



**11**  
Charcoal  
Kilns



**3**  
Elephant  
Treatments



**382**  
Snares  
Lifted



**47**  
HEC  
Elephants  
Moved

This month saw an increase in elephant treatments caused by poaching activities including poisoned arrow poaching and snaring. The De-Snaring Units and Tsavo Mobile Veterinary Unit were both quick to respond to the cases and the teams continue to monitor the elephants in case follow up treatment is needed. The teams similarly were responding to cases of bushmeat poaching throughout May with 382 snares collected during the month as well as 2 arrests of bushmeat poachers and the confiscation of 60kgs of bushmeat from one bushmeat poacher who was caught transporting the meat on a motorbike out of the park.

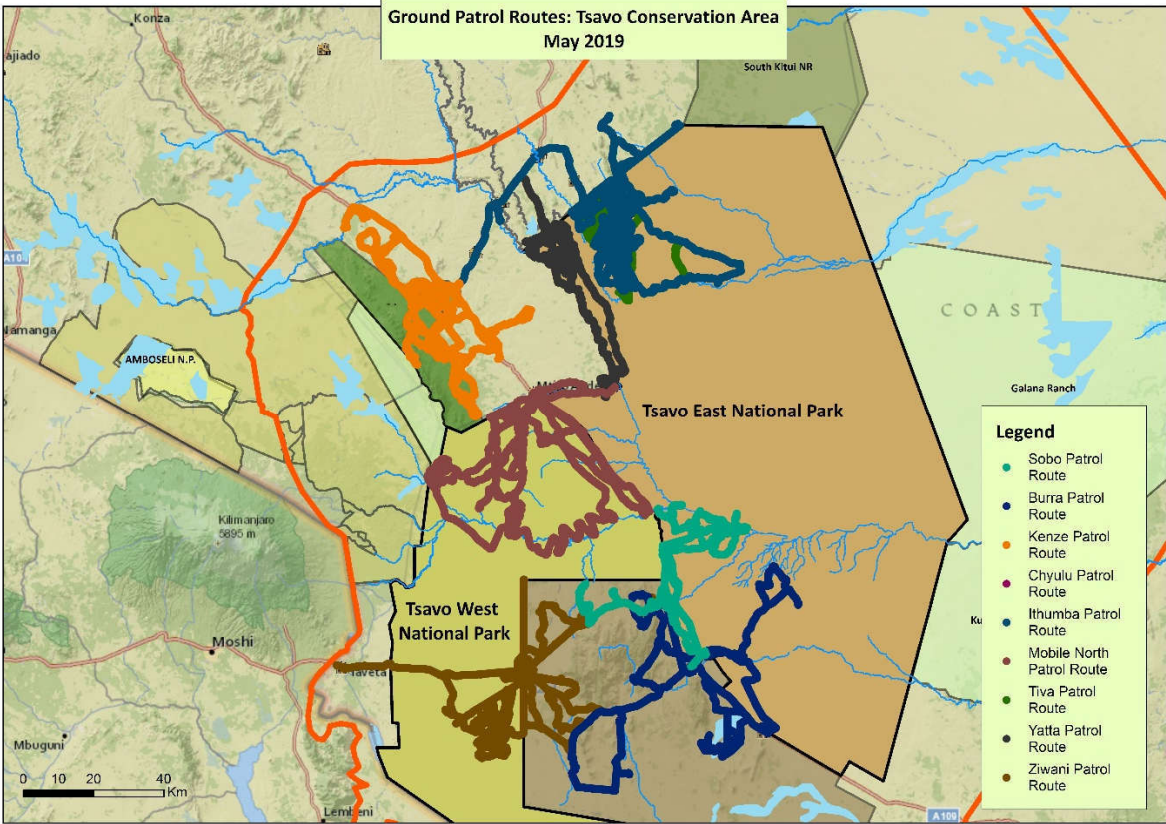
Other activities responded to by the teams included logging with 2 arrests made and livestock incursion; the Ziواني team arrested 39 herders during one operation to push cattle out of the park. 11 charcoal kilns were also discovered whilst on daily patrols by the teams.

The Teams are always on the lookout for any wild animals in need and during May they were lucky to be able to rescue a baby buffalo which was collected by the SWT helicopter and taken to Kaluku for further care. A trapped dikdik and a zebra were also rescued and released back into the wild. The Mito and Mobile South teams were on annual leave this month, whilst all other teams were operating on full patrols.

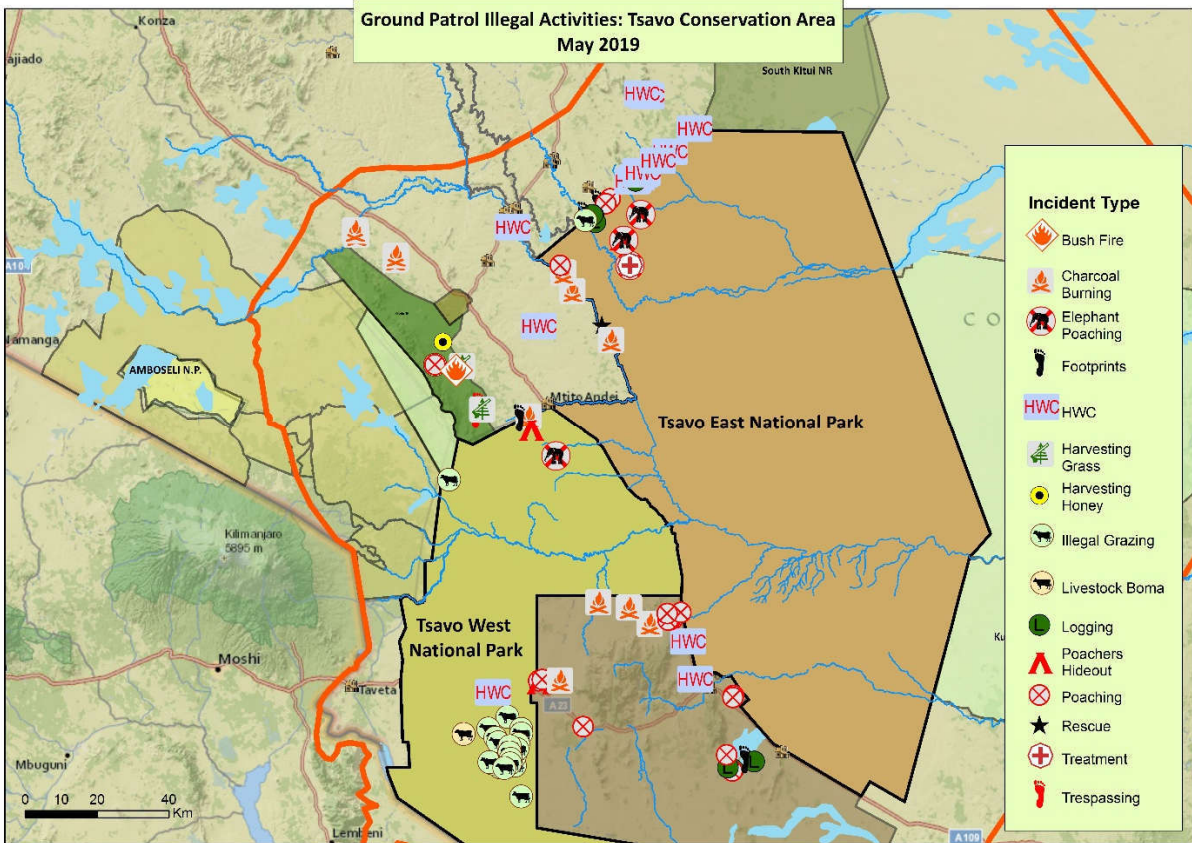




MAP OF ALL UNIT'S PATROL ROUTES



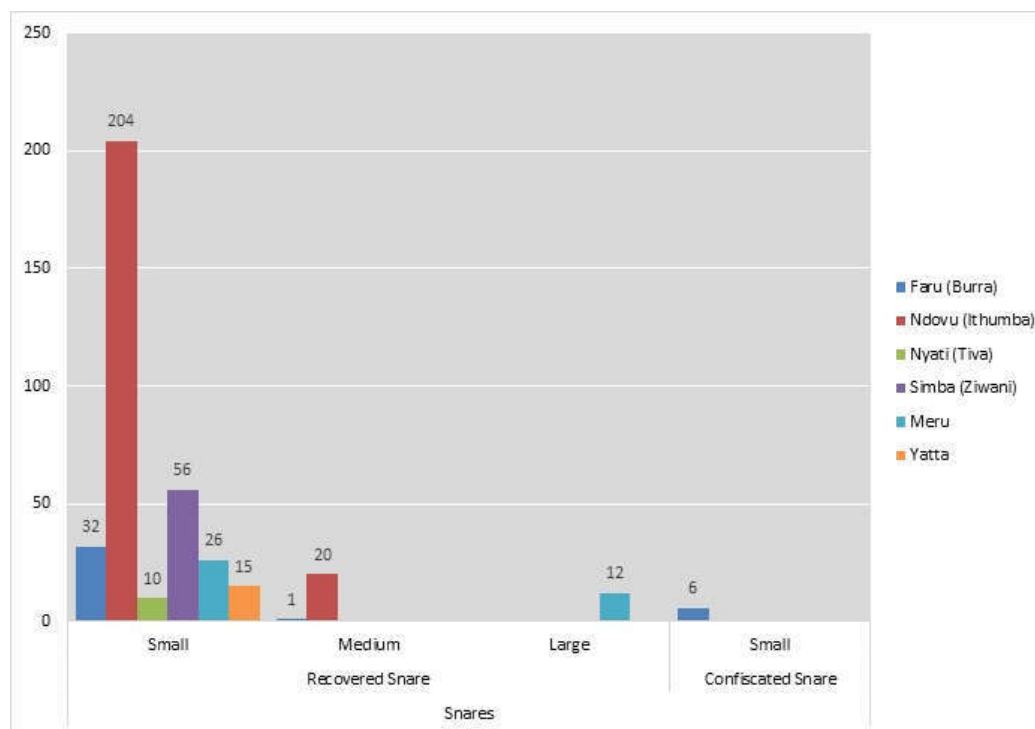
MAP OF ALL UNIT'S ILLEGAL ACTIVITIES



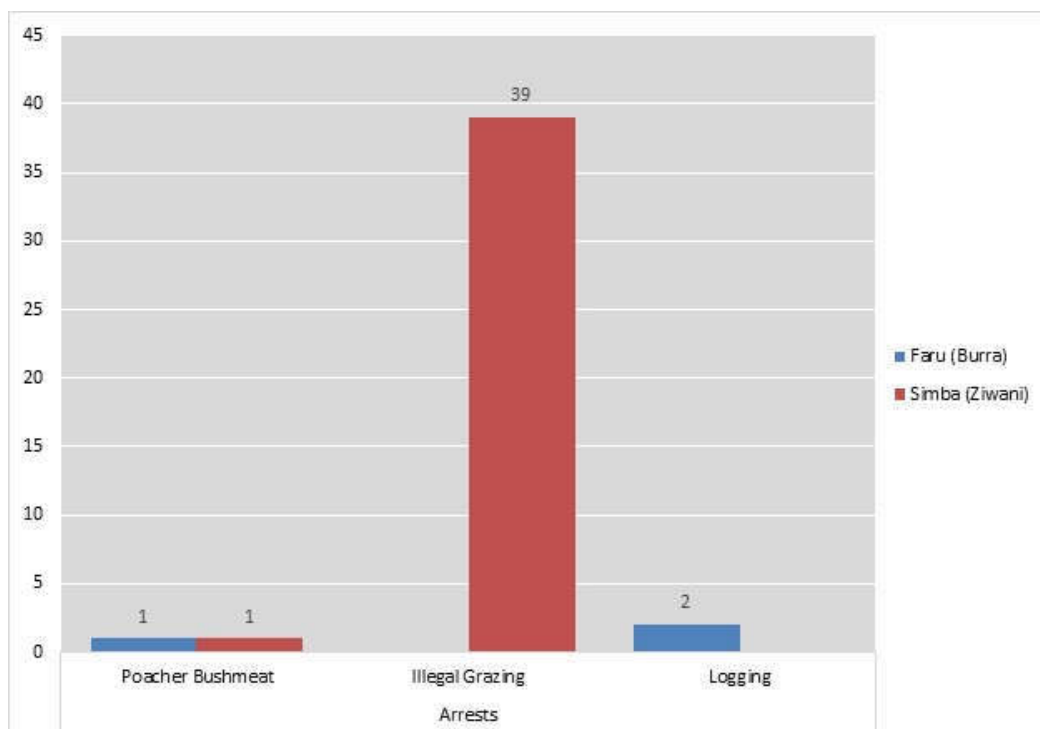
## DAILY SITUATION REPORT MONTHLY SUMMARY – MAY 2019

| De-Snaring Summary<br>May 2019 | Burra<br>(Faru) | Chyulu<br>(Duma) | Kenze<br>(Mamba) | Ithumba<br>(Ndovu) | Tiva<br>(Nyati) | Ziwani<br>(Simba) | Meru      | Yatta     | Sobo      | Mobile<br>North | Total      |
|--------------------------------|-----------------|------------------|------------------|--------------------|-----------------|-------------------|-----------|-----------|-----------|-----------------|------------|
| <b>Days Worked</b>             | <b>13</b>       | <b>13</b>        | <b>31</b>        | <b>31</b>          | <b>29</b>       | <b>30</b>         | <b>17</b> | <b>31</b> | <b>31</b> | <b>31</b>       | <b>257</b> |
| <b>Snares</b>                  | <b>39</b>       |                  |                  | <b>224</b>         | <b>10</b>       | <b>56</b>         | <b>38</b> | <b>15</b> |           |                 | <b>382</b> |
| Recovered Snare                | 33              |                  |                  | 224                | 10              | 56                | 38        | 15        |           |                 | 376        |
| Small                          | 32              |                  |                  | 204                | 10              | 56                | 26        | 15        |           |                 | 343        |
| Medium                         | 1               |                  |                  | 20                 |                 |                   |           |           |           |                 | 21         |
| Large                          |                 |                  |                  |                    |                 |                   | 12        |           |           |                 | 12         |
| Confiscated Snare              | 6               |                  |                  |                    |                 |                   |           |           |           |                 | 6          |
| Small                          | 6               |                  |                  |                    |                 |                   |           |           |           |                 | 6          |
| <b>Arrests</b>                 | <b>3</b>        |                  |                  |                    |                 | <b>40</b>         |           |           |           |                 | <b>43</b>  |
| Poacher Bushmeat               | 1               |                  |                  |                    |                 | 1                 |           |           |           |                 | 2          |
| Illegal Grazing                |                 |                  |                  |                    |                 | 39                |           |           |           |                 | 39         |
| Logging                        | 2               |                  |                  |                    |                 |                   |           |           |           |                 | 2          |
| <b>Confiscated Items</b>       | <b>3</b>        |                  |                  |                    |                 | <b>61</b>         |           | <b>4</b>  |           |                 | <b>68</b>  |
| Weapons                        | 2               |                  |                  |                    |                 |                   |           |           |           |                 | 2          |
| Panga                          | 2               |                  |                  |                    |                 |                   |           |           |           |                 | 2          |
| Tools Equipment                | 1               |                  |                  |                    |                 | 1                 |           | 4         |           |                 | 6          |
| Axe                            | 1               |                  |                  |                    |                 |                   |           | 2         |           |                 | 3          |
| Jembe                          |                 |                  |                  |                    |                 |                   |           | 2         |           |                 | 2          |
| Motorcycle                     |                 |                  |                  |                    |                 | 1                 |           |           |           |                 | 1          |
| Bushmeat kg                    |                 |                  |                  |                    |                 | 60                |           |           |           |                 | 60         |
| Hartebeest                     |                 |                  |                  |                    |                 | 60                |           |           |           |                 | 60         |
| <b>Animal Parts</b>            |                 |                  |                  |                    |                 |                   |           |           | <b>2</b>  |                 | <b>2</b>   |
| Ivory (# tusks)                |                 |                  |                  |                    |                 |                   |           |           | 2         |                 | 2          |
| <b>Destroyed</b>               | <b>1</b>        | <b>4</b>         |                  |                    |                 | <b>1</b>          |           | <b>15</b> | <b>4</b>  | <b>2</b>        | <b>27</b>  |
| Boma                           |                 | 1                |                  |                    |                 |                   |           |           |           |                 | 1          |
| Charcoal Kiln                  | 1               | 3                |                  |                    |                 | 1                 |           | 3         | 2         | 1               | 11         |
| Charcoal Sacks                 |                 |                  |                  |                    |                 |                   |           | 12        | 2         |                 | 14         |
| Poachers Hideout               |                 |                  |                  |                    |                 |                   |           |           |           | 1               | 1          |
| <b>Human Sign</b>              | <b>5</b>        | <b>2</b>         | <b>1</b>         | <b>2</b>           | <b>4</b>        | <b>1</b>          | <b>11</b> |           |           | <b>4</b>        | <b>30</b>  |
| Illegal Grazing                |                 |                  |                  |                    | 1               | 1                 |           |           |           |                 | 2          |
| Harvesting Grass               |                 | 1                | 1                |                    |                 |                   |           |           |           |                 | 2          |
| Illegal Harvesting             |                 | 1                |                  |                    |                 |                   |           |           |           |                 | 1          |
| Logging                        | 1               |                  |                  | 2                  | 2               |                   |           |           |           | 3               | 8          |
| Footprints                     | 3               |                  |                  |                    | 1               |                   | 11        |           |           | 1               | 16         |
| Poachers Hideout               | 1               |                  |                  |                    |                 |                   |           |           |           |                 | 1          |
| <b>Carcass</b>                 |                 |                  |                  | <b>1</b>           |                 |                   |           | <b>1</b>  | <b>1</b>  | <b>1</b>        | <b>4</b>   |
| Elephant                       |                 |                  |                  |                    |                 |                   |           | 1         | 1         | 1               | 3          |
| Warthog                        |                 |                  |                  | 1                  |                 |                   |           |           |           |                 | 1          |
| <b>HWC</b>                     | <b>14</b>       |                  | <b>4</b>         | <b>29</b>          |                 |                   |           | <b>1</b>  |           |                 | <b>48</b>  |
| Problem Elephants              | 14              |                  | 4                | 29                 |                 |                   |           |           |           |                 | 47         |
| Bush Fire                      |                 |                  |                  |                    |                 |                   |           | 1         |           |                 | 1          |
| <b>Rescues</b>                 |                 |                  |                  | <b>2</b>           |                 |                   |           | <b>1</b>  |           |                 | <b>3</b>   |
| Buffalo                        |                 |                  |                  |                    |                 |                   |           | 1         |           |                 | 1          |
| Dikdik                         |                 |                  |                  | 1                  |                 |                   |           |           |           |                 | 1          |
| Zebra                          |                 |                  |                  | 1                  |                 |                   |           |           |           |                 | 1          |
| <b>Treated</b>                 |                 |                  |                  |                    | <b>3</b>        |                   |           |           |           |                 | <b>3</b>   |
| Elephant                       |                 |                  |                  |                    | 3               |                   |           |           |           |                 | 3          |

### TOTAL SNARES COLLECTED – MAY 2019 – All Teams



### TOTAL ARRESTS MADE – MAY 2019 - All Teams







**INDIVIDUAL TEAM REPORTS**

**MAY 2019**



# MAY 2019

## MERU TEAM (Meru National Park)

**PATROL AREA:** This is a mobile team operating in the Meru Conservation Area and National Park

**DAYS ON DUTY: 17**

### SECURITY & INCIDENTS

LIFTING SNARES  
21/5/19

The Meru team lifted big snares at kiolu upstream



LIFTING SNARES  
26/5/19

Lifting small snares at ura downstream area





MERU UNIT MONTHLY ILLEGAL ACTIVITIES AND PATROL ROUTES

